

RS232 to WiFi CONVERTER

Model : RHW-925



Your purchase of this RS232 to WiFi CONVERTER marks a step forward for you into the field of precision measurement. Although this Meter is a complex and delicate instrument, its durable structure will allow many years of use if proper operating techniques are developed. Please read the following instructions carefully and always keep this manual within easy reach.



OPERATION MANUAL

TABLE OF CONTENTS

1. FEATURES.....	1
2. SPECIFICATIONS.....	2
3. FRONT PANEL DESCRIPTION.....	4
4. MEASURING PROCEDURE.....	5
4-1.The initial startup screen.....	5
4-2.Measuring and setting screens.....	5
4-3.The summary description of keyboard.....	6
4-4.Setting Description.....	6
4-5.Set value storage.....	8
4-6.Mesurement and WiFi connection.....	8
4-7.Reply factory setting.....	8
4-8.AP Mode.....	9
4-9.Client Mode (internal network)	12
4-10.Client Mode(External network fixed IP).....	12
4-11.Client Mode(External network floating IP).....	14
4-12.Ethernet Mode connector network floating (intenal network).....	16
4-13.Ethernet Mode connector network floating (extenal network).....	16
4-14.Ethernet Mode is connected via the wireless bridge network.....	16
4-15.Ethernet Mode is connected via the wireless bridge network	17
4-16.RS232 Function SERIAL OUTPUT.....	19

1. FEATURES

- * Can be temperature and humidity data sent to the desired device through WiFi. the use of smart phones or tablet computers developed by the company's free software to do data collection record APP.
- * WiFi work mode: Access Point(AP) or Client mode
- * I/O terminal:
 - 1.DC 9V power input
 - 2.DC 9V power output(power supply for the connecting RS232 meter)
 - 3.Pt-1000 ohm input.
 - 4.Three RS232 input(photo isolate RS232 type)
 - 3.Ethernet RJ45 input.
- * Basic setting:
 - 1.NetMode, 2.SSID, 3.Password, 4.IP address, 5.Port,
 - 6.Gateway address,
- * Simultaneous display Humidity ,Temperature,Web buie, Dew point temp. reading value.
- * Humidity range : 5% to 95%
- * Temprature range : 0 °C to 50 °C, °C/°F
- * Maximum TCP connections to 20
- * Without going through the computer settings, can be used directly after the machine settings

2. SPECIFICATIONS

2-1. General Specifications

Circuit	Custom single-chip microprocessor LSI circuit
Display	LCD Size: 3.2 X 2.4" (60 X 44.4 mm) Dot Matrix backlit LCD (128 X 64 pixels)
Wireless	<ul style="list-style-type: none"> * Support IEEE 802.11b / g / n wireless standards * Support the range of frequency : 2.412 to 2.484 GHz. * Support two types of wireless networks: Access Point(AP) and Client * Support multiple security authentication mechanisms : 64/128/152 bit WEP encryption, WPA-PSK/ WPA2-PSK 、 、 WPA/WPA2 security mechanism.
NET mode setting	<ul style="list-style-type: none"> * Access Point (AP) Mode(Wireless) * Client Mode(Wireless) * Ethernet Mode(RJ45)
Measurement	<ul style="list-style-type: none"> * Humidity/ Temperature * Dew point Temperature * Wet bulb Temperature * Pt 1000 ohm Temp.
Data Output USB/RS232 *Computer interface	RS232 computer serial interface <ul style="list-style-type: none"> * Connect the optional USB cable USB-01 will get the USB plug. * Connect the optional RS232 cable UPCB-02 will get the RS232 plug.
Operating temperature	0 to 50°C (32 to 122°F).
Operating humidity	Less than 80% R.H..
Power supply	AC to DC adapter 9V.
Power consumption	DC 170 mA approximately.
Weight	222 g/0.49 LB.
Dimension	134 X 80 X 32 (5.3 X 3.1 X 1.3 inch). * Dimension is for the meter without antenna only.

Accessories included	* Instruction manual.....	1PCS
	* Hanging unit (with sticker).....	1PCS
	* AC to DC 9V power adapter.....	1PCS
	* Antenna.....	1PCS
Optional Accessories	* USB cable,USB-01.	
	* Data interface cable,UPCB-03.	
	* Pt 1000 Temp. probe,TP-1000	
	* Data Acquisition software,SW-U801-WIN,SW-U818-WIN.	
	* Power interface cable, PWCB-06	

2-2.Electrical Specifications (23 ± 5 °C)

Humidity

Range	Resolution	Accuracy
5 % to 95 %RH	0.1 %RH	< 70 %RH: ± 3 %RH
		≥70 %RH: ±(3 %RH reading + 1 %RH)

Temperature

Range	Resolution	Accuracy
0.0 °C to 50.0 °C	0.1 °C	± 0.8 °C
32.0 °F to 122.0 °F	0.1 °F	± 1.5 °F

Dew point Temp.

Range	Resolution	Accuracy
-25.3 °C to 49.0 °C	0.1 °C	Calculate from the Humidity/Temp. Value
-13.5 °F to 120.0 °F	0.1 °F	

Wet bulb Temp.

Range	Resolution	Accuracy
-5.4 °C to 49.0 °C	0.1 °C	Calculate from the Humidity/Temp. Value
22.2 °F to 120.0 °F	0.1 °F	

Pt 1000 ohm Temperature(optional probe)

Range	Resolution	Accuracy
-10.0 °C to 70.0 °C	0.1 °C	± 1.2 °C
14.0 °F to 158.0 °F	0.1 °F	± 2.5 °F

3. FRONT PANEL DESCRIPTION

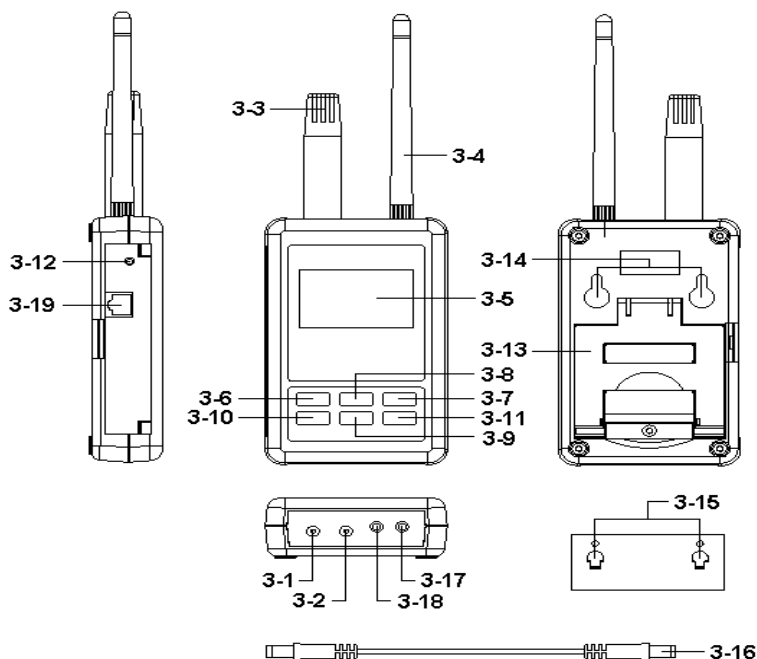


Fig. 1

3-1 DC 9V Power adapter input socket

3-2 DC 9V output socket

3-3 Humidity/Temp. sensor

3-4 Antenna and antenna socket

3-5 Display

3-6 SETUP/ENTER KEY

3-7 EXIT(*) key button

3-8 ▲ key button

3-9 ▼ key button

3-10 ◀ key button

3-11 ▶ key button

3-12 System reset button

3-13 Stand

3-14 Hanging holes

3-15 Hanging unit (with sticker)

3-16 Power interface cable/plugs

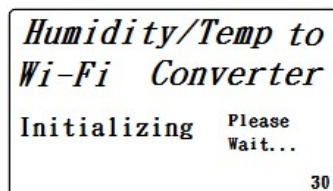
3-17 Isolate RS232 output socket

3-18 Pt1000 input socket

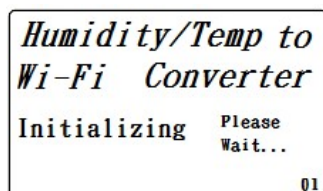
3-19 Network socket(RJ45)

4. MEASURING PROCEDURE

4-1.The initial startup screen



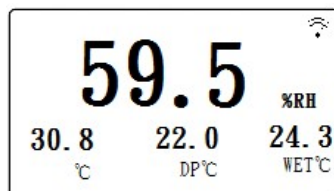
SCREEN4-1-1



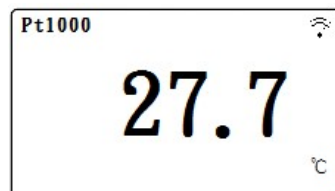
SCREEN4-1-2

4-2.Measuring and setting screens:

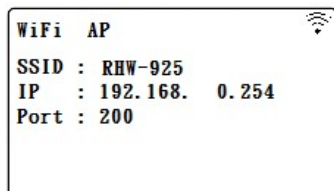
1.Measurement screen:



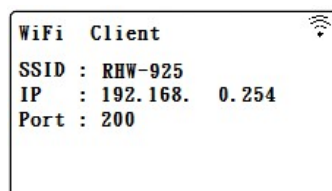
SCREEN4-2-1



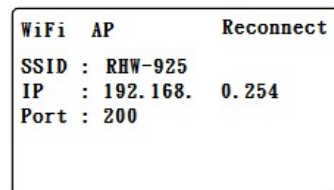
SCREEN4-2-2



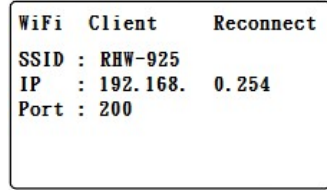
SCREEN4-2-3



SCREEN4-2-4



SCREEN4-2-5



SCREEN4-2-6

2.Setting screen:

```
NetMode : Client
SSID    : RHW-925
Encrypt : none
Password: 12345678
IP      : 192.168. 0.254
Port    : 200
```

1/2

SCREEN4-2-7

```
Gateway:
        192.168. 0. 1
Unit:   ℃
Default Settings: N
```

2/2

SCREEN4-2-8

4-3.The summary description of keyboard:

- 1.SETUP(Enter) KEY: Setting screen into the select key
- 2.In the setting mode:
 - 2-1.Press ▲ or ▼ to select the field in the upper and lower beating
 - 2-2.▲ or ▼ > 2 SEC.: The selected field will rapidly beating
 - 2-3.▲ + ▼ > 2 SEC.: Then the entire column cleanup
 - 2-4.Press ▲ KEY hold short press ▼ KEY and the right of the text will be cleared
 - 2-5. ◀ 、 ▶ KEY: Left and right keys
 - 2-6.EXIT/SHIFT(✱) KEY: Press key text input type selection or setting screen left
- 3.In the measurement mode:
 - 3-1.In Easy mode, press ▲ + ▼ > 2 SEC. Then turned into full mode
 - 3-2.In full mode, press ▲ + ▼ > 2 SEC. Then becomes easy mode
 - 3-3.EXIT/SHIFT(✱) KEY: Backlight control key

4-4.Setting Description:

- 1.When the POWER ON, then enter the startup screen countdown 30 SEC. (SCREEN4-1-1 & SCREEN4-1-2) to 0 SEC. Then into the measurement screen (SCREEN4-2-3 or SCREEN4-2-4).
- 2.Press SETUP KEY once into the setup screen as SCREEN4-2-7 or SCREEN4-2-8
- 3.In the function directory option Press ▲ or ▼ KEY, functional directory option will flash.
- 4.Press ◀ or ▶ KEY into the content selection function directory option (in this case will flash), After selecting the complete press SETUP KEY Then back to the function directory option to determine the setting options

5.Function directory:

5-1.NetMode: Select AP or Client, the factory setting is Client.

- A. Enter this option, then press ◀ or ▶ KEY contents into the option, then press ▲ or ▼ KEY to select AP or Client, After determining Press SETUP KEY do confirm the contents, then will return to NetMode directory
- B. Press ▼ KEY into the SSID option from NetMode

5-2.SSID: The default setting is RHW-925

- A. Enter up to 21 characters
- B. Press ◀ or ▶ KEY then enter the option contents, then press ▲ or ▼ KEY to select the input text, press EXIT / SHIFT KEY select words in English case or numbers. Determined by SETUP KEY do confirm the contents, then will return to the SSID directory.
- C. Press ▼ KEY into the Encrypt option from SSID

5-3.Encrypt:The default setting is none

- A. none/wep_open/wep/wpa2_tkip/wpa2_aes/wpa2_tkip/wpa2_aes/wpa2_tkip/wpa2_aes total of nine
- B. After pressing ▲ or ▼ KEY select the option by the need, press SETUP KEY to confirm, then will return to Encrypt directory
- C. Press ▼ KEY into the Password option from Encrypt

5-4.Password: The default setting is 12345678

- A. Press ◀ or ▶ KEY then enter the option contents, then press ▲ or ▼ KEY to select the input text, press EXIT / SHIFT KEY select English words large, lowercase and numbers Press SETUP KEY do confirm the contents, then will return to Password directory
- B. Press ▼ KEY into the IP option from Password

5-5.IP: The default setting is 192.168.0.254

- A. Press ◀ or ▶ KEY then enter the option contents, then press ▲ or ▼ KEY to select the number, press the SETUP KEY The contents do confirm, then will return to the IP directory
- B. Press ▼ KEY into the Port option from IP

5-6.Port: The default setting is 200

- A. Input Range:1-65535
- B. Press ◀ or ▶ KEY then enter the option contents, then press ▲ or ▼ KEY to select the number, press the SETUP KEY The contents do confirm, then will return to the Port directory
- C. Press ▼ KEY into the Gateway option from Port

5-7.Gateway: The default setting is 192.168.0.1

A. Press ◀ or ▶ KEY then enter the option contents, then press ▲ or ▼ KEY to select the number, press the SETUP KEY The contents do confirm, then will return to the Gateway directory

B.Press ▼ KEY into the Meter CH.option from Gateway

5-8.UNIT:

A. Press ◀ or ▶ KEY once,into the UNIT Choice, then use ▲ or ▼ Key to select °C or °F, then press SETUP Key back to UNIT Choice.

B. Press▼ KEY into the Default Settings option from Meter CH.

5-9.Default Settings: Reply factory setting (refer NO.4-7)

4-5.Set value storage:

Press EXIT / SHIFT KEY save settings, and return to the measurement screen, such as SCREEN4-2-5 or SCREEN4-2-6. This time to reconnect after about 25 SEC WiFi is doing set after, then back SCREEN4 -2-3 or SCREEN4-2-4 screen.

4-6. Measurement and WiFi connection:

A. In SCREEN4-2-1 is Temperature and Humidity measurement Function screen.

B. Pt1000 measurement Function:

1) Pt1000 probe insert to Fig.1 3-18.

2) In SCREEN4-2-1, press ▶ Key once ,into the Pt1000 measurement screen (as SCREE 4-2-2),then press ▶ Key again,will back SCREE 4-2-1.

3) SCREE 4-2-3 or SCREE 4-2-4 upper right corner Symbol flashes, that WIFI connection is ok.

4-7.Reply factory setting

1.Press SETUP KEY once you into the setup screen as SCREEN4-2-7 & SCREEN4-2-8

2.Press ▲ 、 ▼ KEY select the option to Default Settings item, press ▶ KEY once you enter N option, press ▲ or ▼ KEY select Y press Enter KEY ,will return to directory option then press EXIT / SHIFT KEY will return to factory default action to do its screen will SCREEN4-2-5 or SCREEN4-2-6, after about 25 SEC later. would return SCREEN4-2-3 or SCREEN4-2-4.

4-8.AP Mode:

1.First, install lutron dedicated APP software

1-1.The use of smart phone iOS system software download

Lutron MeterApp (SCREEN4-8-1) ,iOS Password: aZ6210.

1-2.After the download is complete, install it.



SCREEN4-8-1



SCREEN4-8-2

1-3.If use of smart phone Android system software download ,please use smart phone scan the QR code provided below ,will link to Android app download file(.pdf), then Download and install according to the method shown in the file, or directly to the following URL download Lutron MeterApp.

<https://tinyurl.com/lutronapp>



Android Password: Az6210

Android QR Code

2.The RHW-925 boot into the measurement screen (SCREEN4-2-1).

2-1.Determine the following set parameters (such as SCREEN4-2-6)

- A.NetMode: AP
- B.SSID: RHW-925
- C.IP: 192.168.0.254
- D.Port: 200

2-2.Start Smart Phone WiFi, make RHW-925 connection (SCREEN4-8-2).

2-3.Open MeterApp software (such as SCREEN4-8-3)

- A. In SCREEN4-8-3 select Step1 (Meter1)
- B. Is displayed SCREEN4-8-4, select Step2 tool button then into the SCREEN4-8-5
- C. Into the relevant information in SCREEN4-8-5
 - 1) Meter name: Meter1 name can be changed to the desired user name
 - 2) CH NO.: In accordance Meter CH NO. To enter
 - 3) Sampling time: minutes as a reference, check after do Logger function (must be set)
 - 4) IP: In accordance with RHW-925 IP as input and must tick (must be set)

- 5) Port: In accordance with RHW-925 Port as input and must tick (must be set)
- 6) Save file: Select the Logger path to be stored (must be set)
- 7) Alarm Beeper: After checking the SCREEN4-8-7 to tie the set , when they meet the conditions have an effect
- 8) Alarm SMS: After checking the SCREEN4-8-7 to tie the set, when meet the conditions will send SMS
- D. In SCREEN4-8-6 the Save tool button, the value will be set according to Save the storage, and it will return to SCREEN4-8-4 screen when Step3 green and flashing that means the RHW-925 connection
- E. In SCREEN4-8-4 of Step4 (CH1) click on the picture into the SCREEN4-8-7, then do High and Low Set and checked, when you press the Return smart phone screen will return to SCREEN4-8-4 When the measured value have reached the condition CH1-CH3 will show red numbers and have Beeper and send SMS.
- F. In SCREEN4-8-4 of Step5 tool button to switch directly display the value of Meter1-Meter4
- G. Re-connect: When they find breaking news WiFi is not connected, you can press the function do reconnect action.
- H. Auto Log: Sampling time is set based on the time and checked, do the automatic recording function (such as SCREEN4-8-5).
- I. Manual Log: Each time you press the tool button, then record sum. Both formats Auto Log or Manual Log, archival records are xml .
- J. View Log: See the recorded data directly on smart phones (such as SCREEN4-8-8).

REMARK:

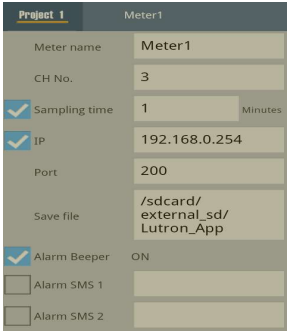
if use lutron sw-818 software, channels please setting to 12 CH .



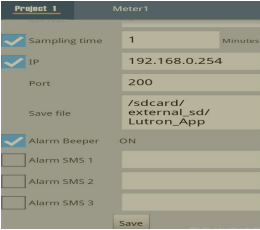
SCREEN4-8-3



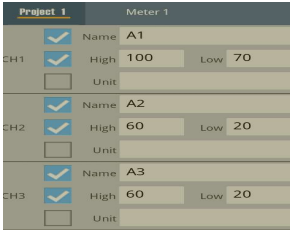
SCREEN4-8-4



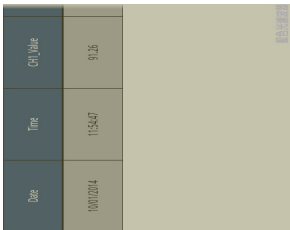
SCREEN4-8-5



SCREEN4-8-6



SCREEN4-8-7



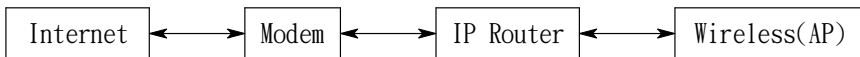
SCREEN4-8-8

4-9.Client Mode (internal network):

- 1.First, you must prepare a wireless device as AP.
 - 1-1.This device set SSID for RHW-925 (by the user to determine the SSID name)
 - 1-2.Password not set
- 2.The RHW-925 is set to Client mode, the relevant parameters are as follows:
 - 2-1.NetMode: Client
 - 2-2.SSID: RHW-925
 - 2-3.IP: 192.168.0.254
 - 2-4.Port: 200
- 3.AS SCREE4-2-3 , SCREE4-2-4 .

4-10.Client Mode(External network fixed IP):

- 1.Simple schematic network:



2. The RHW-925 is set to Client mode, the relevant parameters are as follows:
 - 2-1.NetMode: Client
 - 2-2.SSID: RHW-925
 - 2-3.IP: 192.168.0.254
 - 2-4.Port: 200
 - 2-5.Gateway: 192.168.0.1(With a smart phone in the App Store to download IP Tools, after the installation and execution can be learned)

3.into the IP Router do parameter settings, the contents of the red box set you can do

DIR-632

VIRTUAL SERVER

PORT FORWARDING

APPLICATION RULES

QOS ENGINE

NETWORK FILTER

ACCESS CONTROL

WEBSITE FILTER

INBOUND FILTER

FIREWALL SETTINGS

ROUTING

ADVANCED WIRELESS

WI-FI PROTECTED

SETUP

ADVANCED

TOOLS

STATUS

SUPPORT

PORT FORWARDING RULES:

This option is used to open multiple ports or a range of ports in your router and redirect data through those ports to a single PC on your network. This feature allows you to enter ports in various formats including, Port Ranges (100-150), Individual Ports (80, 68, 888), or Mixed (1020-5000, 689).

Save Settings

Don't Save Settings

24 --- PORT FORWARDING RULES

Name

RTW-925

IP Address

192.168.0.254

<<

Application Name

>>

<<

Computer Name

>>

Ports to Open

TCP

200

UDP

200

Schedule

Always

Inbound Filter

Allow All

Helpful Hints...

Check the **Application Name** drop down menu for a list of predefined applications. If you select one of the predefined applications, click the arrow button next to the drop down menu to fill out the corresponding field.

You can select a computer from the list of DHCP clients in the **Computer Name** drop

4.Execution MeterApp, enter the need of parameters. IP item which required the use of IP Tools software to learn the input

Project 1

Meter1

Meter name

Meter1

CH No.

3

✓

Sampling time

1

Minutes

✓

IP

27.105.102.236

Port

101

Save file

/sdcard/
external_sd/
Lutron_App

✓

Alarm Beeper

ON

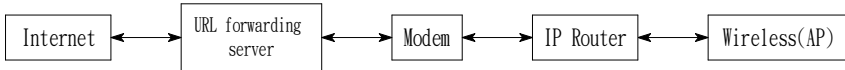
Alarm SMS 1

Alarm SMS 2

13

4-11.Client Mode(External network floating IP):

1.Simple schematic network:



2.The RHW-925 is set to Client mode, the relevant parameters are as follows:

2-1.NetMode: Client

2-2.SSID: RHW-925

2-3.IP: 192.168.0.254

2-4.Port: 200

2-5.Gateway:192.168.0.1(With a smart phone in the App Store to download IP Tools,after the installation and execution can be learned)

3.into the IP Router do parameter settings, the contents of the red box set you can do

DIR-632	SETUP	ADVANCED	TOOLS	STATUS	SUPPORT																								
VIRTUAL SERVER PORT FORWARDING APPLICATION RULES QOS ENGINE NETWORK FILTER ACCESS CONTROL WEBSITE FILTER INBOUND FILTER FIREWALL SETTINGS ROUTING ADVANCED WIRELESS WI-FI PROTECTED	<div>PORT FORWARDING RULES:</div> <p>This option is used to open multiple ports or a range of ports in your router and redirect data through those ports to a single PC on your network. This feature allows you to enter ports in various formats including, Port Ranges (100-150), Individual Ports (80, 68, 888), or Mxed (1020-5000, 689).</p> <div>Save Settings Don't Save Settings</div> <div>24 -- PORT FORWARDING RULES</div> <table><thead><tr><th></th><th></th><th></th><th>Ports to Open</th><th></th></tr></thead><tbody><tr><td>Name</td><td></td><td></td><td>TCP</td><td>Schedule</td></tr><tr><td><input checked="" type="checkbox"/> RHW-925</td><td><< Application Name</td><td></td><td>200</td><td>Always</td></tr><tr><td>IP Address</td><td></td><td></td><td>UDP</td><td>Inbound Filter</td></tr><tr><td>192.168.0.254</td><td><< Computer Name</td><td></td><td>200</td><td>Allow All</td></tr></tbody></table>							Ports to Open		Name			TCP	Schedule	<input checked="" type="checkbox"/> RHW-925	<< Application Name		200	Always	IP Address			UDP	Inbound Filter	192.168.0.254	<< Computer Name		200	Allow All
			Ports to Open																										
Name			TCP	Schedule																									
<input checked="" type="checkbox"/> RHW-925	<< Application Name		200	Always																									
IP Address			UDP	Inbound Filter																									
192.168.0.254	<< Computer Name		200	Allow All																									

Helpful Hints...

Check the **Application Name** drop down menu for a list of predefined applications. If you select one of the predefined applications, click the arrow button next to the drop down menu to fill out the corresponding field.

You can select a computer from the list of DHCP clients in the **Computer Name** drop

4. Apply for free transfer to www.noip.com address, the name of the application will be transferred to the address input to the IP Router

D-Link

DIR-632 // **SETUP** **ADVANCED** **TOOLS** **STATUS** **SUPPORT**

DYNAMIC DNS

The DDNS feature allows you to host a server (Web, FTP, Game Server, etc...) using a domain name that you have purchased (www.whateveryournameis.com) with your dynamically assigned IP address. Most broadband Internet Service Providers assign dynamic (changing) IP addresses. Using a DDNS service provider, your friends can enter your host name to connect to your game server no matter what your IP address is.

Sign up for D-Link's Free DDNS service at www.dlinkddns.com

DYNAMIC DNS

Enable Dynamic DNS : ☒

Server Address : << Select Dynamic DNS Server ▼

Host Name :

Username or Key :

Password or Key :

Verify Password or Key :

Timeout : (hours)

Status : Connected

Helpful Hints...

To use this feature, you must first have a Dynamic DNS account from one of the providers in the drop down menu.

[More...](#)

5. Execution MeterApp, enter the need of parameters. IP item which required the use of IP Tools software to learn the input

Project 1	Meter1
Meter name	Meter1
CH No.	3
<input checked="" type="checkbox"/> Sampling time	1 Minutes
<input checked="" type="checkbox"/> IP	27.105.102.236
Port	101
Save file	/sdcard/ external_sd/ Lutron_App
<input checked="" type="checkbox"/> Alarm Beeper	ON
<input type="checkbox"/> Alarm SMS 1	
<input type="checkbox"/> Alarm SMS 2	

4-12.Ethernet Mode connector network floating (intenal network):

1.Simple schematic network:



2.The RHW-925 is set to Client mode, the relevant parameters are as follows:

2-1.IP: 192.168.0.254

2-2.Port: 200

2-3.Gateway: 192.168.0.1

3.RJ45 connector model as 3-19, Fig1.

4-13.Ethernet Mode connector network floating (extenal network):

1.Simple schematic network:



2.The RHW-925 is set to Client mode, the relevant parameters are as follows:

2-1.IP: 192.168.0.254

2-2.Port: 200

2-3.Gateway: 192.168.0.1

3.RJ45 connector model as 3-19, Fig1.

4-14.Ethernet Mode is connected via the wireless bridge network (External network fixed IP):

1.Simple schematic network:



2.The RHW-925 is set to Client mode, the relevant parameters are as follows:

2-1.IP: 192.168.0.254

2-2.Port: 200

2-3.Gateway: 192.168.0.1

3. Enter the IP Router to set parameters, Set the contents of the red box.

D-Link

DIR-632

SETUP ADVANCED TOOLS STATUS SUPPORT

VIRTUAL SERVER
PORT FORWARDING
APPLICATION RULES
QOS ENGINE
NETWORK FILTER
ACCESS CONTROL
WEBSITE FILTER
INBOUND FILTER
FIREWALL SETTINGS
ROUTING
ADVANCED WIRELESS
WI-FI PROTECTED

PORT FORWARDING RULES:

This option is used to open multiple ports or a range of ports in your router and redirect data through those ports to a single PC on your network. This feature allows you to enter ports in various formats including, Port Ranges (100-150), Individual Ports (80, 68, 888), or Mixed (1020-5000, 689).

Save Settings Don't Save Settings

24 --- PORT FORWARDING RULES

Name	Application Name	Ports to Open	Schedule	Inbound Filter
<input checked="" type="checkbox"/> RHW-925	<< Application Name >>	TCP 200	Always	Allow All
IP Address 192.168.0.254	<< Computer Name >>	UDP 200		

Helpful Hints...

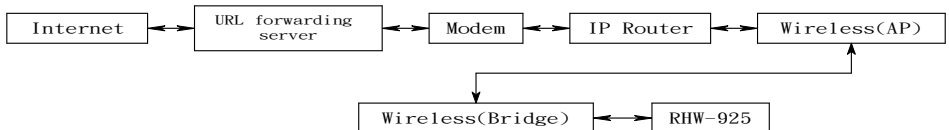
Check the **Application Name** drop down menu for a list of predefined applications. If you select one of the predefined applications, click the arrow button next to the drop down menu to fill out the corresponding field.

You can select a computer from the list of DHCP clients in the **Computer Name** drop

4. RJ45 connector model as 3-19, Fig1.

4-15. Ethernet Mode is connected via the wireless bridge network (External network Floating IP):

1. Simple schematic network:



2. The RHW-925 is set to Client mode, the relevant parameters are as follows:

2-1. IP: 192.168.0.254

2-2. Port: 200

2-3. Gateway: 192.168.0.1

3. Enter the IP Router to set parameters, Set the contents of the red box.

D-Link

DIR-632 // SETUP ADVANCED TOOLS STATUS SUPPORT

PORT FORWARDING RULES:

This option is used to open multiple ports or a range of ports in your router and redirect data through those ports to a single PC on your network. This feature allows you to enter ports in various formats including, Port Ranges (100-150), Individual Ports (80, 68, 888), or Mixed (1020-5000, 689).

Save Settings Don't Save Settings

24 --- PORT FORWARDING RULES

Name	Application Name	Ports to Open	Schedule
<input checked="" type="checkbox"/> RHW-925	<< Application Name	TCP 200	Always
<input type="checkbox"/> IP Address	<< Computer Name	UDP 200	Inbound Filter
192.168.0.254			Allow All

Helpful Hints...

Check the **Application Name** drop down menu for a list of predefined applications. If you select one of the predefined applications, click the arrow button next to the drop down menu to fill out the corresponding field.

You can select a computer from the list of DHCP clients in the **Computer Name** drop

4. To www.dlinkddns.com apply for a free address, the application of the address name input to the IP Router.

D-Link

DIR-632 // ADMIN TIME SYSLOG EMAIL SETTINGS SYSTEM FIRMWARE DYNAMIC DNS SYSTEM CHECK SCHEDULES

DYNAMIC DNS

The DDNS feature allows you to host a server (Web, FTP, Game Server, etc...) using a domain name that you have purchased (www.whateveryournames.com) with your dynamically assigned IP address. Most broadband Internet Service Providers assign dynamic (changing) IP addresses. Using a DDNS service provider, your friends can enter your host name to connect to your game server no matter what your IP address is.

Sign up for D-Link's Free DDNS service at www.dlinkddns.com

Save Settings Don't Save Settings

DYNAMIC DNS

Enable Dynamic DNS : ☒

Server Address : www.no-ip.com << Select Dynamic DNS Server

Host Name : lutronrd.no-ip.org

Username or Key : lutronrd

Password or Key : *****

Verify Password or Key : *****

Timeout : 576 (hours)

Status : Connected

Helpful Hints...

To use this feature, you must first have a Dynamic DNS account from one of the providers in the drop down menu.

More...

5. When the Metro App is implemented, the required parameters are entered using the IP Tools software as SCREEN4-8-4 , SCREEN4-8-5.

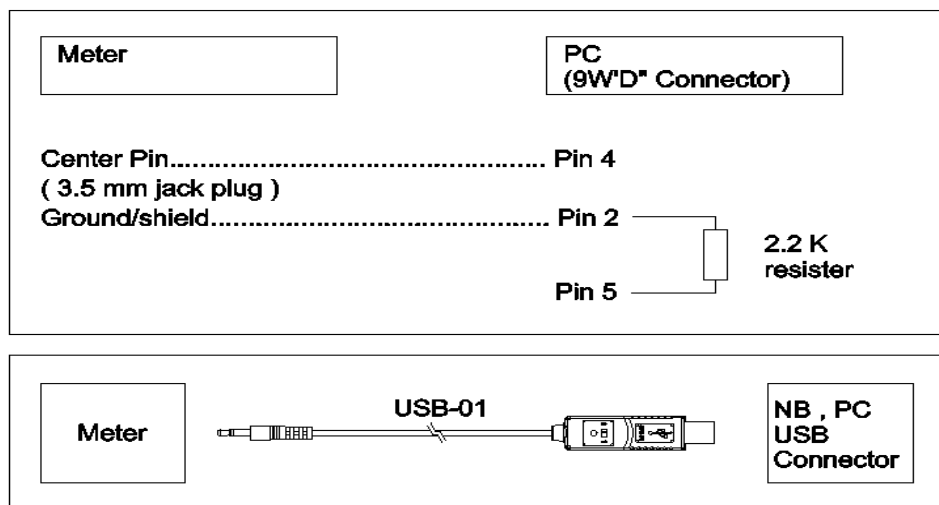
6.RJ45 connecter model as 3-19 , Fig1.

4-16.RS232 Function SERIAL OUTPUT

The instrument is provided an 3.5 mm dia. Phone socket (3-17, Fig. 1) for RS232 computer interface socket.

The connector output is a 16 digits data stream which can be utilized to the user's specific application.

A RS232 lead with the following connection will be required to link the instrument with the PC or NB USB port or serial port.



The 16 digits data stream will be displayed in the following format :

D15 D14 D13 D12 D11 D10 D9 D8 D7 D6 D5 D4 D3 D2 D1 D0

Each digit indicate the following status :

D15	Start Word		
D14	4		
D13	1 ~ 9		
D12 & D11	Annunciator for Display		
	01=°C	02=°F	04 = %RH
D10	Polarity		
	0 = Positive 1 = Negative		
D9	Decimal Point(DP), position from right to the left 0 = No DP, 1= 1 DP, 2 = 2 DP, 3 = 3 DP		
D8 to D1	Display reading, D1 = LSD, D8 = MSD For example : If the display reading is 1234, then D8 to D1 is : 00001234		
D0	End Word		

RS232 setting

Baud rate	9600
Parity	No parity
Data bit no.	8 Data bits
Stop bit	1 Stop bit